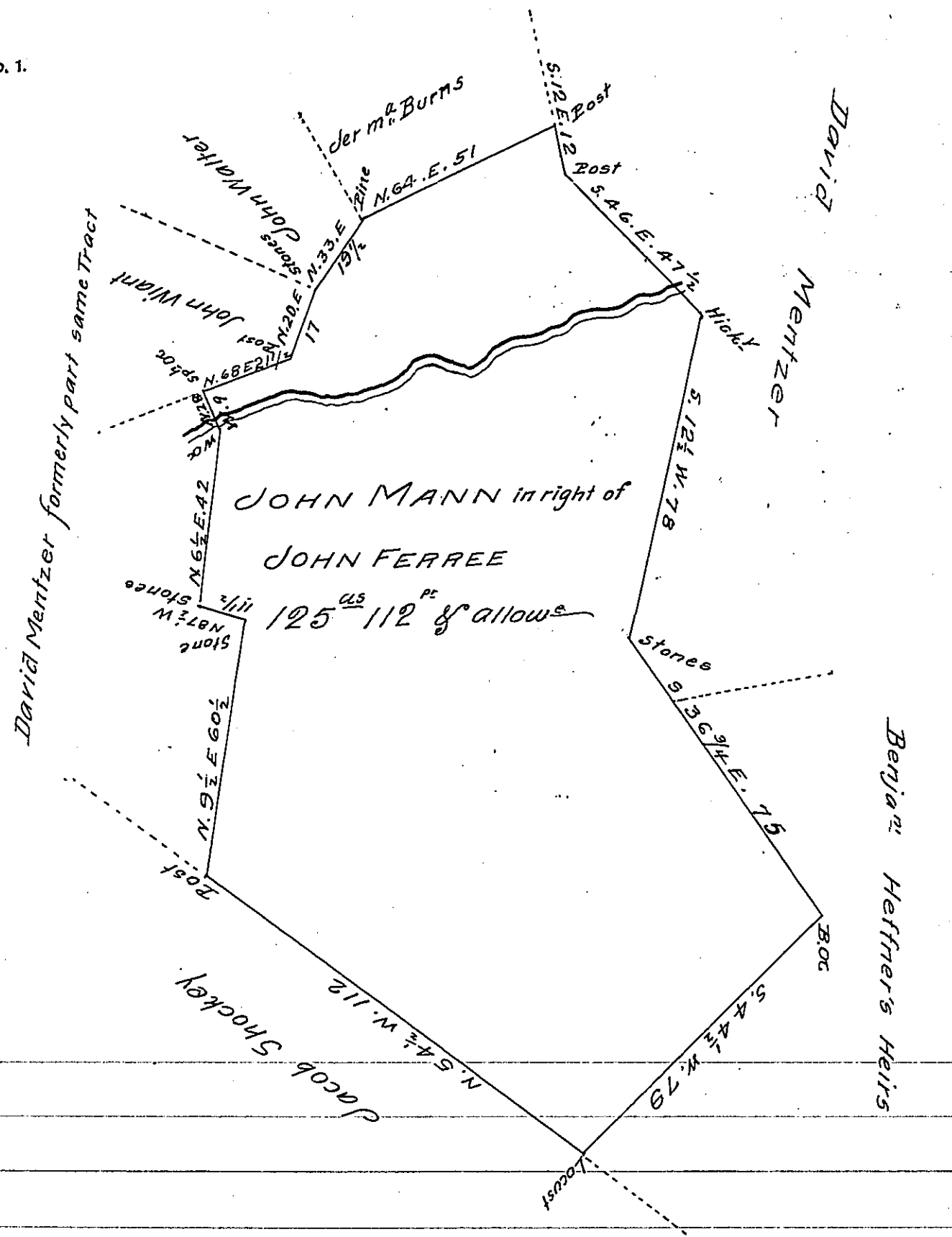


FORM NO. 1.



A Draught of a Tract of Land situated in Washington Township Franklin County containing One hundred and twenty five acres & One hundred and twelve perches & allowance for Roads &c.

Being part of a larger Tract which was surveyed on Warrant of John Ferree dated June 10th 1762

Surveyed and laid off from the other part of the Tract for John Mann August 18th 1809

Thomas Poe D.S.

To Andrew Porter Esq^r
Surveyor General

IN TESTIMONY that the above is a copy of the original remaining on file in the Department of Internal Affairs of Pennsylvania, made conformably to an Act of Assembly approved the 16th day of February 1833, I have hereunto set my hand and caused the Seal of said Department to be affixed at Harrisburg, this tenth day of August 1907

Henry Fowler
Secretary of Internal Affairs.